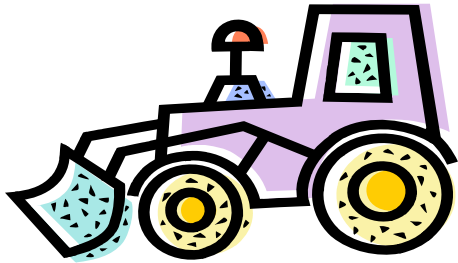


The City of Hillsboro's leaf pick-up program helps reduce flooding caused by leaves clogging the storm drains



Leaf Drop Location/Dates:

Fairground Sports complex on 28th Ave, next to the tennis courts

**City residents only**  
**No contractors**

9:30am - 3:30pm

Saturday, November 21st  
Saturday, December 19th  
Saturday, January 16th

Questions - call  
503-615-6509

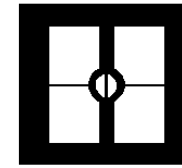
Recorded information 503-681-6445

Please follow these guidelines to increase program efficiency:

- Loose leaves instead of bagged, where possible, are preferred.
- Pile leaves, windrow fashion, in the street, leave a minimum of 12" between the curb and the leaf piles to allow storm water to drain.
- Keep piles less than 3 feet high.
- Leaves only.....yard debris and/or garbage will not be picked up.
- Do not block mailboxes in order to avoid delay in mail delivery.
- Do not block intersections with leaves.
- Remove or turn basketball hoops and other obstructions.
- Move vehicles from the area during your scheduled week.



Emergencies, severe winter weather, or extremely heavy leaf fall may cause the crew to get off schedule. However, we will attempt to follow the schedule as much as possible.



**City of Hillsboro**  
**2008**  
**Free Curbside Leaf**  
**Pick-up**

2009 Pick-up Schedule

**Leaves should be at the street several days before your scheduled area.**

Area Dates

1	Nov 3- Nov 6 & Dec 21-Dec 24
2	Nov 9-Nov 13 & Dec 28 - Dec 31
3	Nov 16-Nov 19 & Jan 4 -Jan 7
4	Nov 20-Nov 25 & Jan 8-Jan 13
5	Nov 27 - Dec 2 & Jan 14 - Jan 20
6	Dec 3-Dec 7 & Jan 21-Jan 25
7	Dec 8 - Dec 14 & Jan 26 - Feb 1
8	Dec 15 -Dec 18 & Feb 2-Feb 5

No Pick Up On Holidays:

Nov 11th - Veterans Day

Nov 26th - Thanksgiving

Dec 25th - Christmas

Jan 1st - New Years

Jan 18th - Martin Luther King Jr Day